

WaT Web aided Telemetry

Introduction

WaT is a cloud based web server for telemetry applications. It supports all of Infinite's devices as well as few 3rd party devices.

The server is a host for multiple clients and user accounts allowing seamless 24/7 unmanned device telemetry with centralised data management.

Features

- Support for all Infinite product ranges including BSC, ADU & SCOM.
- Web interface accessible using any browser & device.
- Geographical map toolset to manage & supervise devices.
- A secure cloud back office offers device connectivity via SMS FTP, Email, Text files & TCP socket.
- Rule based alarm event forwarding & notification.
- Interface design allows use for any kind of application

Device & data management

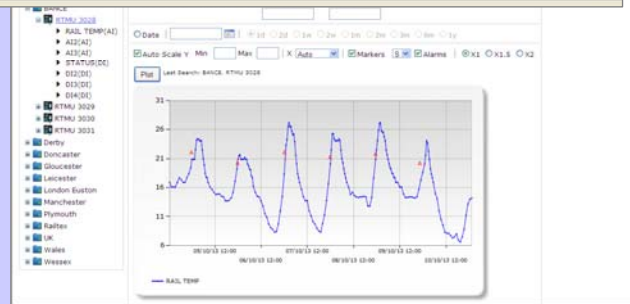
The WaT server database is Microsoft SQL Server. There is a comprehensive set of tools for users to :

- Create and manage groups of devices
- View, edit, delete, search & export data.
- Plot graphs and correlate measurement data in graphs.
- Create plot templates.
- Retrieve data backups.
- Configure user rights & restrictions.
- Configure rule based alarm event forwarding & notification via email, SMS or twitter.

www.cloud-telemetry.com

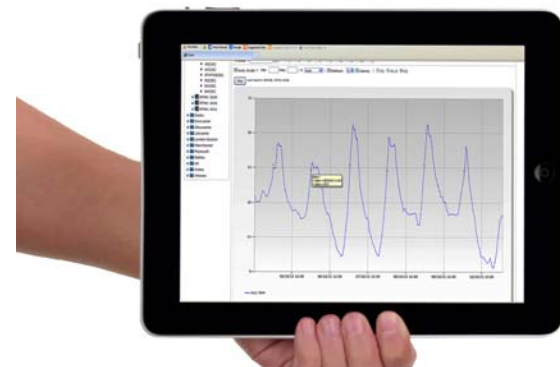
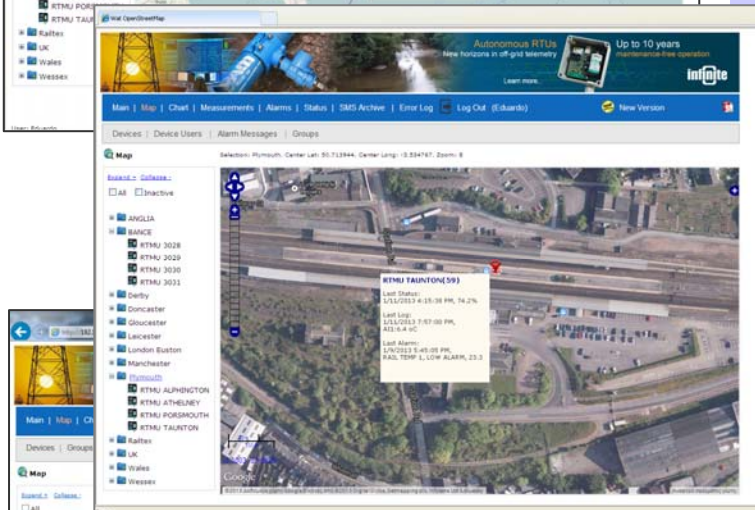
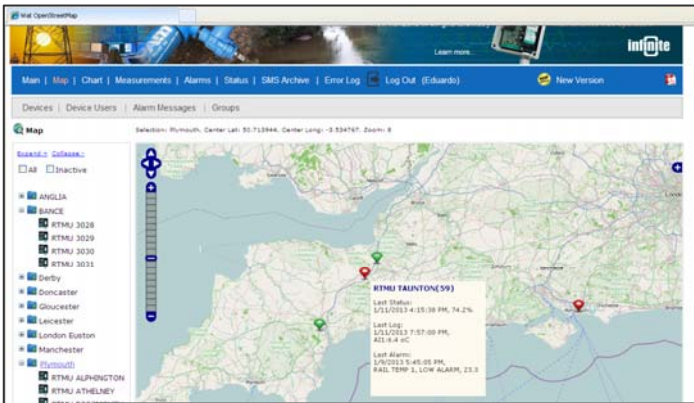


This image shows the login and device management interface of the WaT Telemetry Server. At the top, there is a login form with the text 'infinite WaT Telemetry Server' and 'Login to our telemetry server'. Below this are fields for 'User Name' and 'Password', and a 'Log In >' button. Below the login form is a table listing various devices. The table has columns for 'Group', 'ID', 'Device', 'Last Status', 'Signal St', 'Status', 'Logging', 'A.I.', 'Alarm', and 'Act'. The table contains several rows of data for different devices like 'HINDLE', 'CONCEAFTER', 'LIVERPOOL', etc. Below the table is an 'Alarm List' section with columns for 'Ch AS', 'Ch DS', 'Ch CR', 'Msg Date', 'Msg Date', 'Contacts', 'Value', 'Group', 'Device', and 'ID'. This section also contains a table of alarm events.



Applications

- Remote telemetry
- Remote monitoring, alarming & control
- Central telemetry data management
- Multi user applications



Alarming & annunciation

- Manage alarm data and plot graphs
- Configure rules for server based alarm annunciation.
- Forward alarms & notifications via email, SMS or twitter.
- Acknowledge alarms via SMS or email

Geographical maps

- Visualise alarms on maps
- View groups of devices status
- Plot GPS position data

Data backup

- User data are stored securely and backed up 24/7 with redundancy.
- Users can export telemetry data and create backups.

Technical characteristics

Host address	www.cloud-telemetry.com
Front end	Microsoft ASP.net Runs on any browser or device
Database	Microsoft SQL Server 2013
Server	HW Cloud based 2X HP Proliant DL380G5 (2XQuad Xeon 3Ghz, 16GB, 4TB)
HD)	
Modems	QSM26 GSM quad band modems
Internet	Cloud VDSL connected

Subscribe information

Code	WAT-X
X=S/L	1 year subscription
X=CL	Extra user login

Try it free

Address:	www.cloud-telemetry.com
User name:	infinite
Password:	guest

Infinite Informatics, Ltd.
 1, Valaoritou Street
 GR-54626 Thessaloniki, Greece
 Phone: +30-2310-553545,
 Fax: +30-2310-552006
 Email: sales@indinf.gr
 URL: www.infinite.com.gr, www.indinf.gr

Representative - Authorized dealer

